



Velbus[®] temperature controller

Component : VMBGPTC(W/B)

Glass touch panel with OLED screen that can operate up to 12 external and 1 internal temperature sensor. Each sensor contains its own program to control a heating or cooling installation. You can configure the programs on the glass panel or via PC software (Velbuslink). Furthermore the glass panel has 8 pages of 4 buttons for normal operations.



VMBGPTCB
(Black version)

VMBGPTCW
(White version)

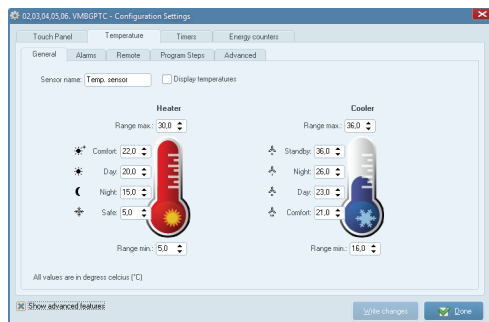


Specifications

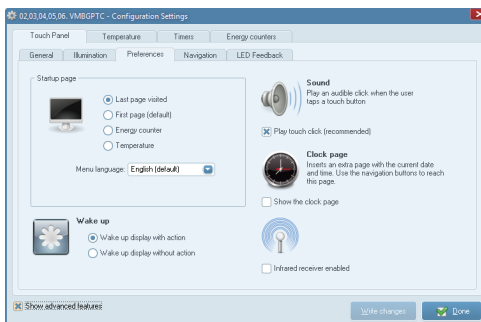
- LED indication for supply and data (at backside).
- mTouch[®] technology
- Safety glass
- power supply: 12...18VDC
- consumption: 22mA
- 250 possible addresses
- dimensions:
 - 86 x 86 x 11mm / 3.38 x 3.38 x 0.43"
 - 4mm (0.15") glass + 7mm (0.27") distance to wall
 - depth: 28mm (1.10") including connector

optional:

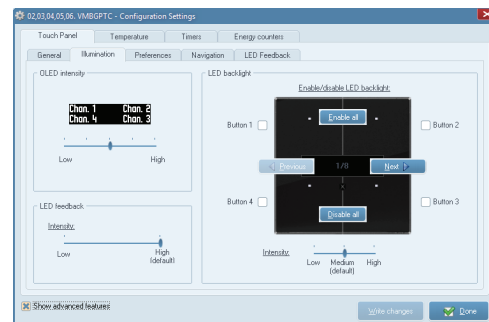
- VMBGPFC: Frame for Velbus Glass Panel (claw version) - 5PCS
- VMBGPFS: Frame for Velbus Glass Panel (screw version) - 5PCS



Temperature setting



Preferences



Illumination