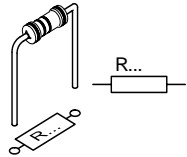


START

1 Resistor - Weerstand - Résistance - Widerstand - Resistencia - Motstand - Vastus - Resistenze



◇ R1:150K

◇ R2:15K

◇ R3:1K

◇ R4:330K

◇ R5:15K

◇ R6:47K

(Brown, Green, Yellow) -(Bruin, Groen, Geel) -(Brun, Vert, Jaune) -(Braun, Grün, Gelb) -(Brun, Grön, Gul) -(Ruskea, Vihreä, Keltainen) -(Marrón, Verde, Amarillo) (Castanho, Verde, Amarelo) -(Marrone, Verde, Giallo)

(Brown, Green, Orange) -(Bruin, Groen, Oranje) -(Brun, Vert, Orange) -(Braun, Grün, Orange) -(Brun, Grön, Orange) -(Ruskea, Vihreä, Oranssi) -(Marrón, Verde, Naranja) -(Castanho, Verde, Laranja) -(Marrone, Verde, Aranciato)

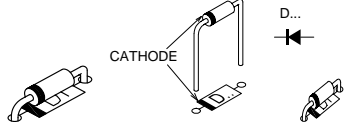
(Brown, Black, Red) -(Bruin, Zwart, Rood) -(Brun, Noir, Rouge) -(Braun, Schwarz, Rot) -(Brun, Svart, Röd) -(Ruskea, Musta, Punainen) -(Marrón, Negro, Rojo) -(Castanho, Preto, Encarnado) -(Marrone, Nero, Rosso)

(Orange, Orange, Yellow) -(Oranje, Oranje, Geel) -(Orange, Orange, Jaune) -(Orange, Orange, Gelb) -(Orange, Orange, Gul) -(Oranssi, Oranssi, Keltainen) -(Naranja, Naranja, Amarillo) -(Laranja, Laranja, Amarelo) -(Aranciato, Aranciato, Giallo)

(Brown, Green, Orange) -(Bruin, Groen, Oranje) -(Brun, Vert, Orange) -(Braun, Grün, Orange) -(Brun, Grön, Orange) -(Ruskea, Vihreä, Oranssi) -(Marrón, Verde, Naranja) -(Castanho, Verde, Laranja) -(Marrone, Verde, Aranciato)

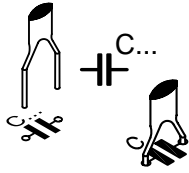
(Yellow, Purple, Orange) -(Geel, Paars, Oranje) -(Jaune, Violet, Orange) -(Gelb, Violet, Orange) -(Gul, Lila, Orange) -(Keltainen, Purppura, Oranssi) -(Amarillo, Morado, Naranja) -(Amarelo, Violeta, Laranja) -(Giallo, Viola, Aranciato)

2 DIODE ◇ D1: 1N4007
◇ D2: 1N4148
◇ D3: 1N4148



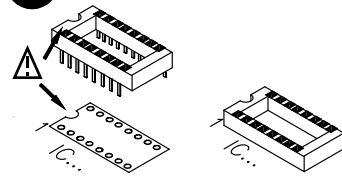
Watch the polarity!
Att. à la polarité!

3 CAPACITOR



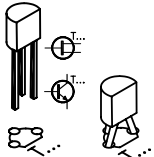
◇ C2 : 100n (104)

4 IC SOCKET



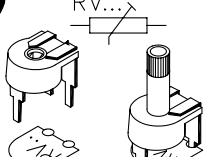
◇ IC1: 14P socket

5 TRANSISTOR



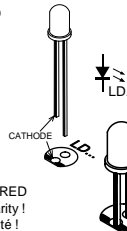
◇ T1 : BC547 or eq.

6 TRIMMER RV...



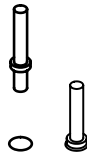
◇ RV1 : 100K

7 LED



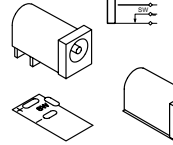
◇ LD1:3mm RED
Watch the polarity!
Att. à la polarité!

8 PCB PINS



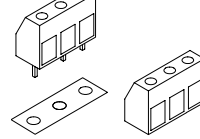
◇ SK3

9 POWER JACK



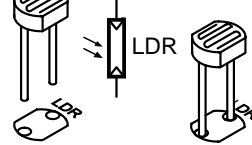
◇ SK2

10 TERMINAL BLOCK



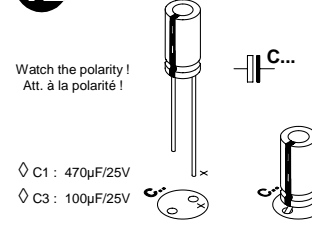
◇ SK1

11 LDR



◇ LDR

12 ELECTROLYTIC CAPACITOR

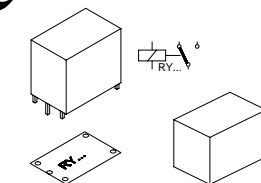


Watch the polarity!
Att. à la polarité!

◇ C1 : 470µF/25V

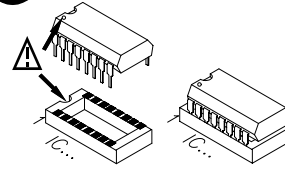
◇ C3 : 100µF/25V

13 RELAY



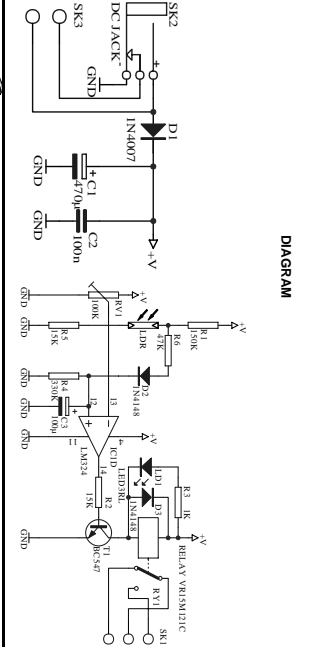
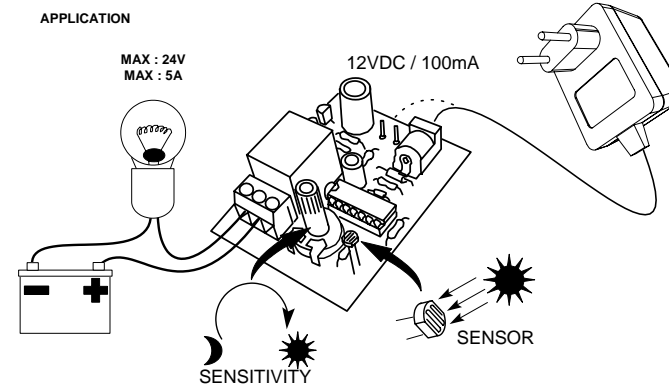
◇ RY1

14 IC



◇ IC1: LM324 (LM224)

APPLICATION



DIAGRAM