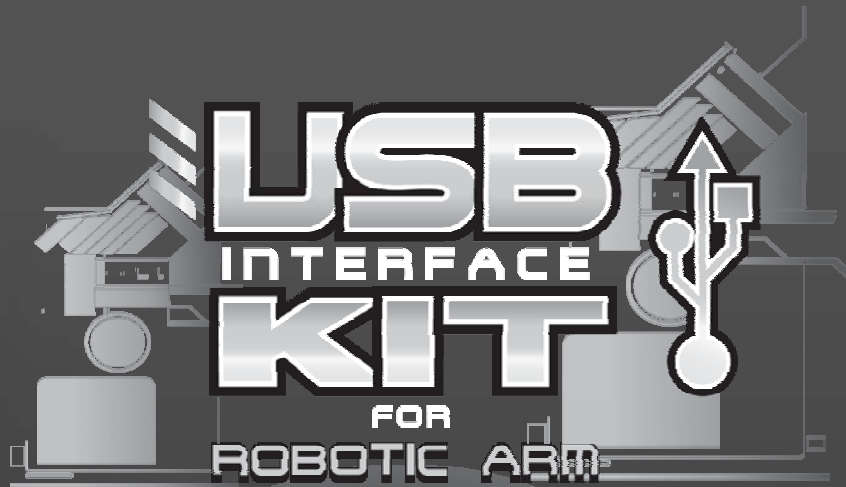


USB INTERFACE KIT FOR ROBOTIC ARM



OS
Windows Vista™
Windows® XP

Assembly and Instruction Manual

Contents

USB INTERFACE KIT FOR ROBOTIC ARM:

1. Product Introduction	P.1
2. Tools You May Need	P.1
3. Mechanical Parts List	P.1
4. Disconnect the wired controller and PCB from Robotic Arm	P.2
5. Install USB PCB and cover	P.5
6. How it works	P.8

USB INTERFACE KIT FOR ROBOTIC ARM

1 Product Introduction:

This is an optional USB Interface Kit which connects Robotic Arm to Windows® personal computer USB port.





2 Tools You May Need:



3 Mechanical Parts List:

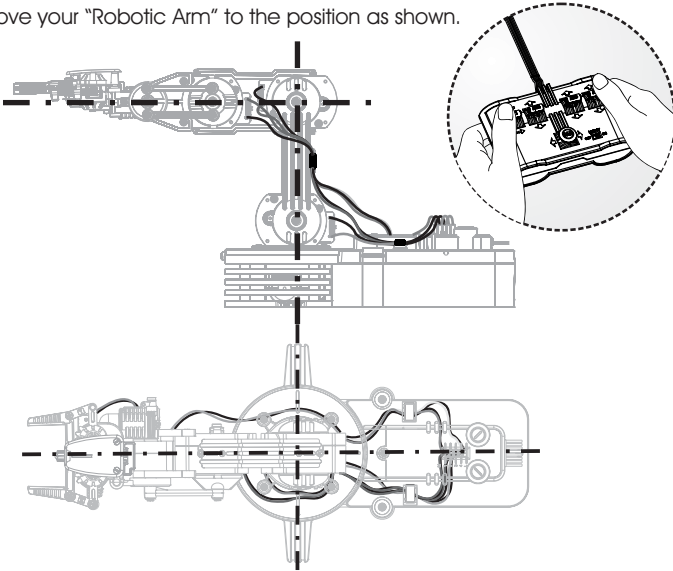
P1	USB Wires	P2	PCB Cover
	Qty		Qty
	1		1

P3	USB PCB Assembly	
	Qty	
		1

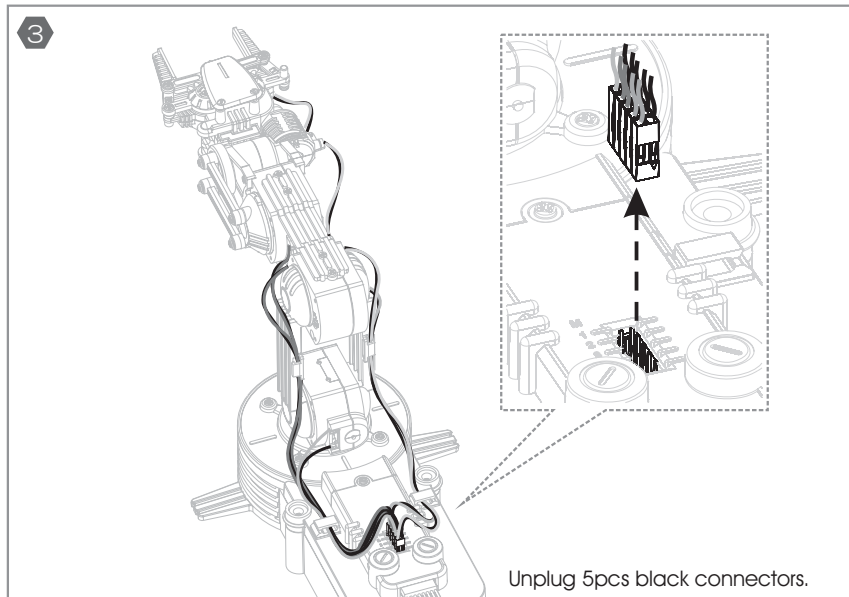
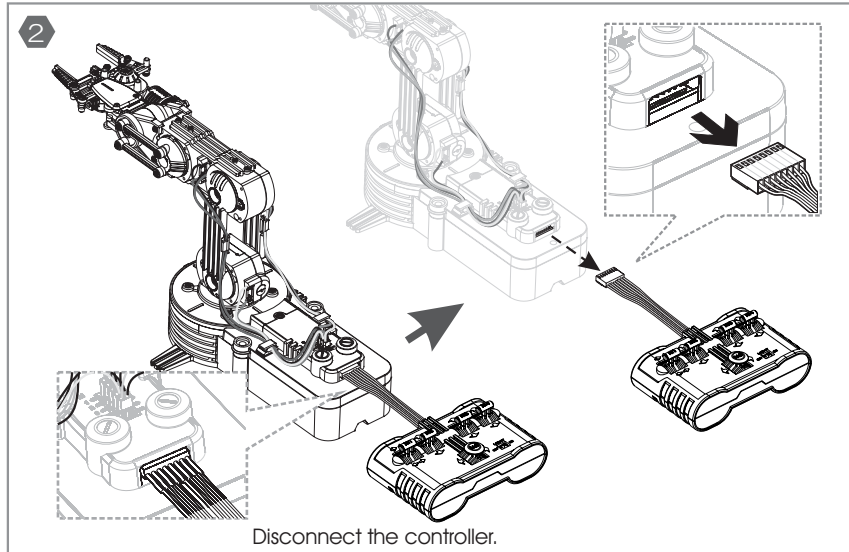
P4	CD-R	
	Qty	
		1

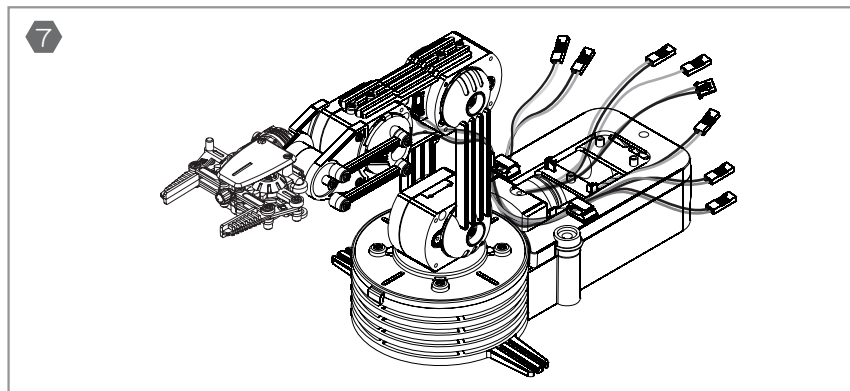
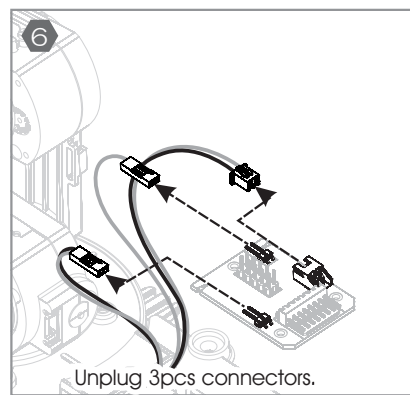
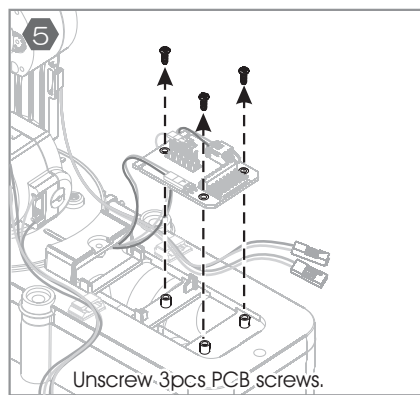
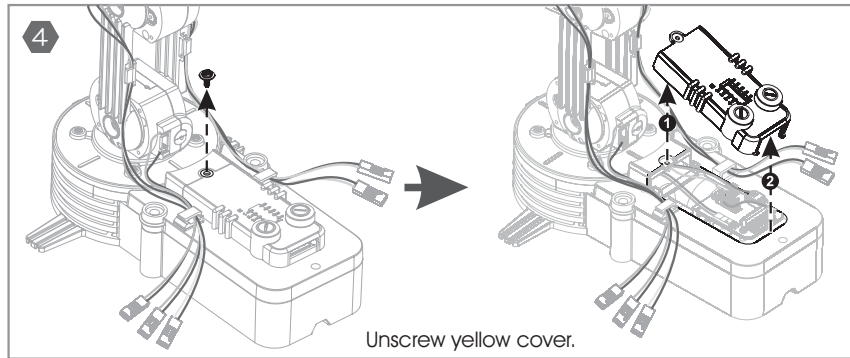
4 Disconnect the wired controller and PCB from Robotic Arm:

1 Move your "Robotic Arm" to the position as shown.

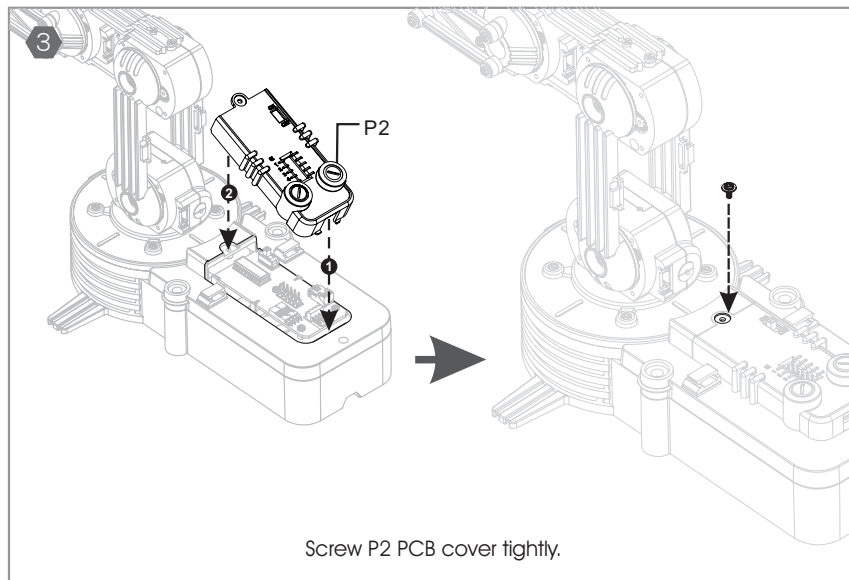
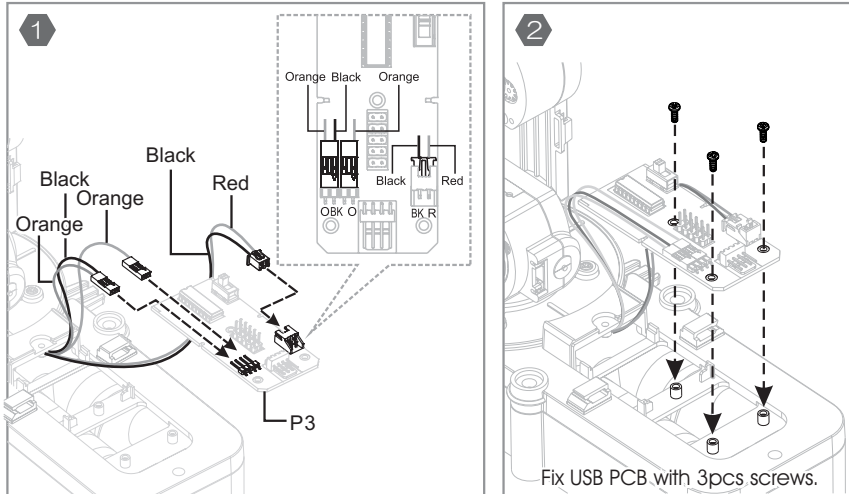


The diagram illustrates the robotic arm assembly in a specific orientation. It shows a top-down view of the arm's base and a side view of the arm's structure. A callout circle shows a close-up of a hand using a screwdriver to disconnect a component from the controller board.

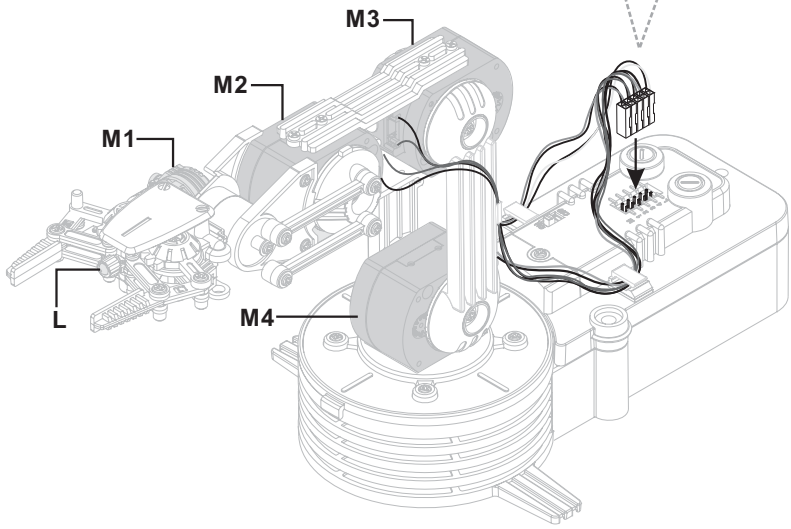
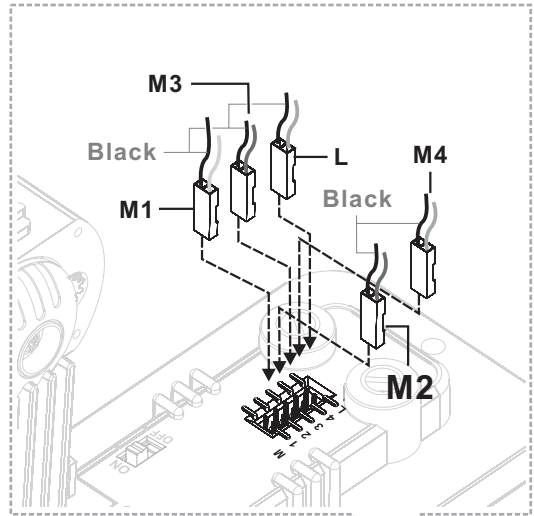


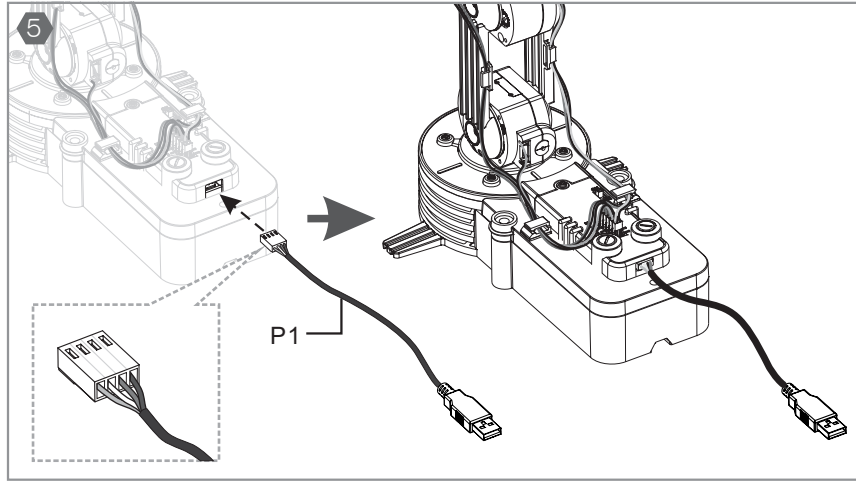


5 Install USB PCB And Cover:

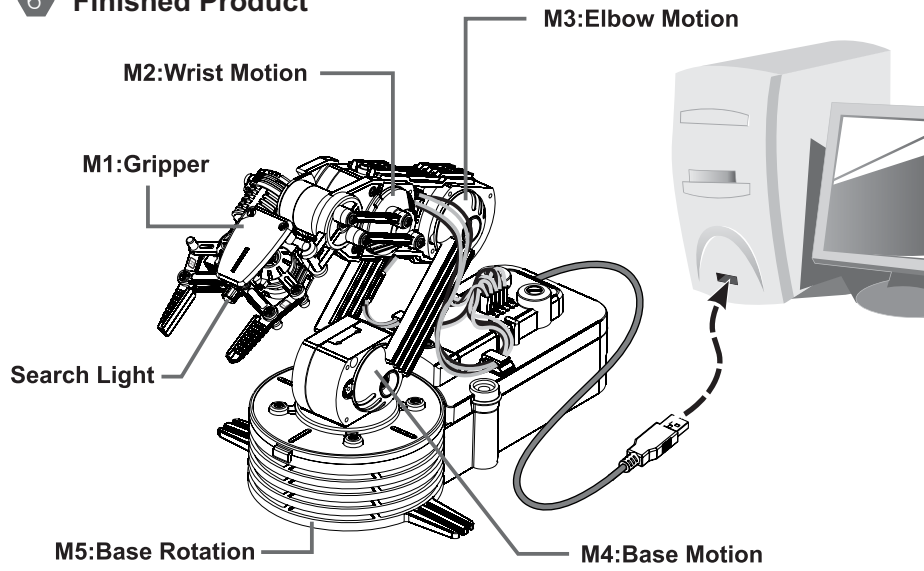


4





6 **Finished Product**



5 How It Works:

*** See operation details from the enclosed CD-R.**

Note: 1. All the five gearboxes equipped with safety gear, when the arm open, close, up or lower to the maximum position, and user keeps pushing the buttons, the safety gear will start to work to protect the gearbox and make 'da, da, da...'sound.

2. To extend the life of gearbox, release the buttons once you hear the safety gear emit 'da, da, da' sound.

3. Please download Adobe Acrobat Reader for the Robotic Arm Use's Manual.(www.adobe.com)



4350001511

