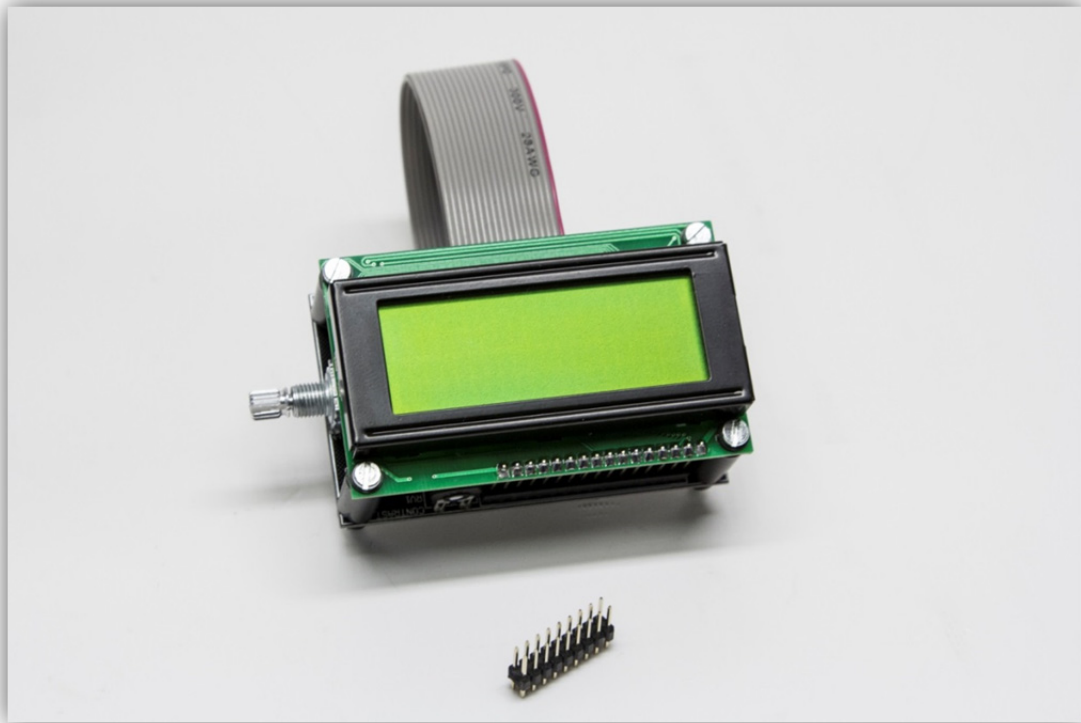


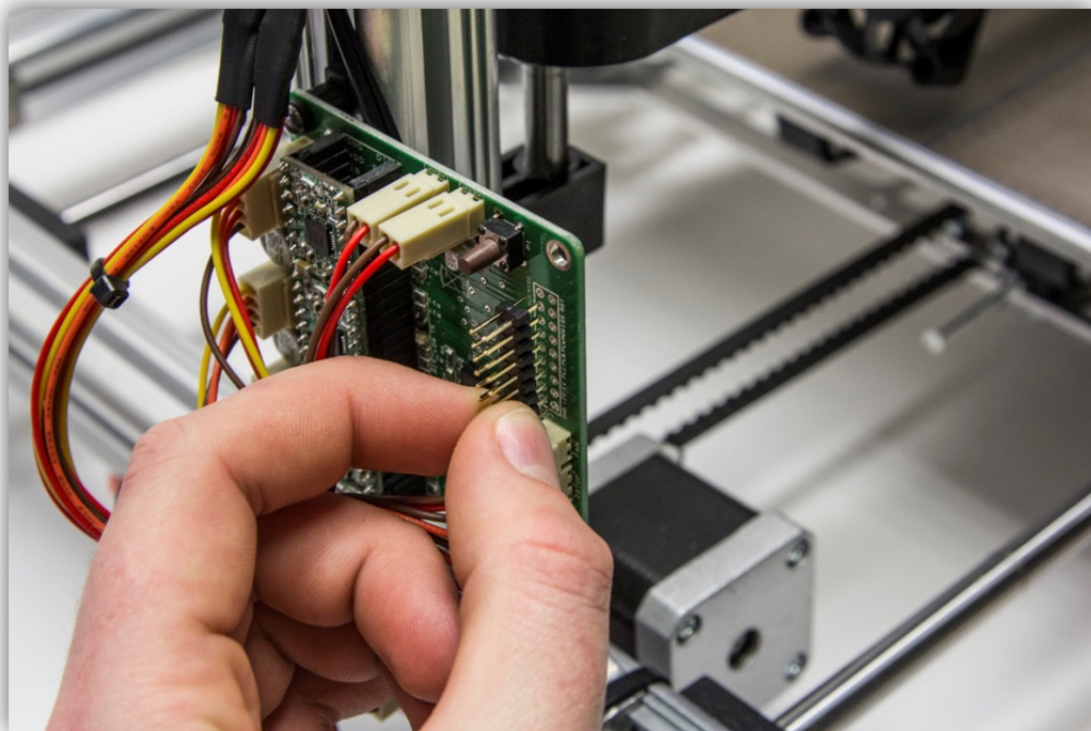
## MOUNTING THE VM8201

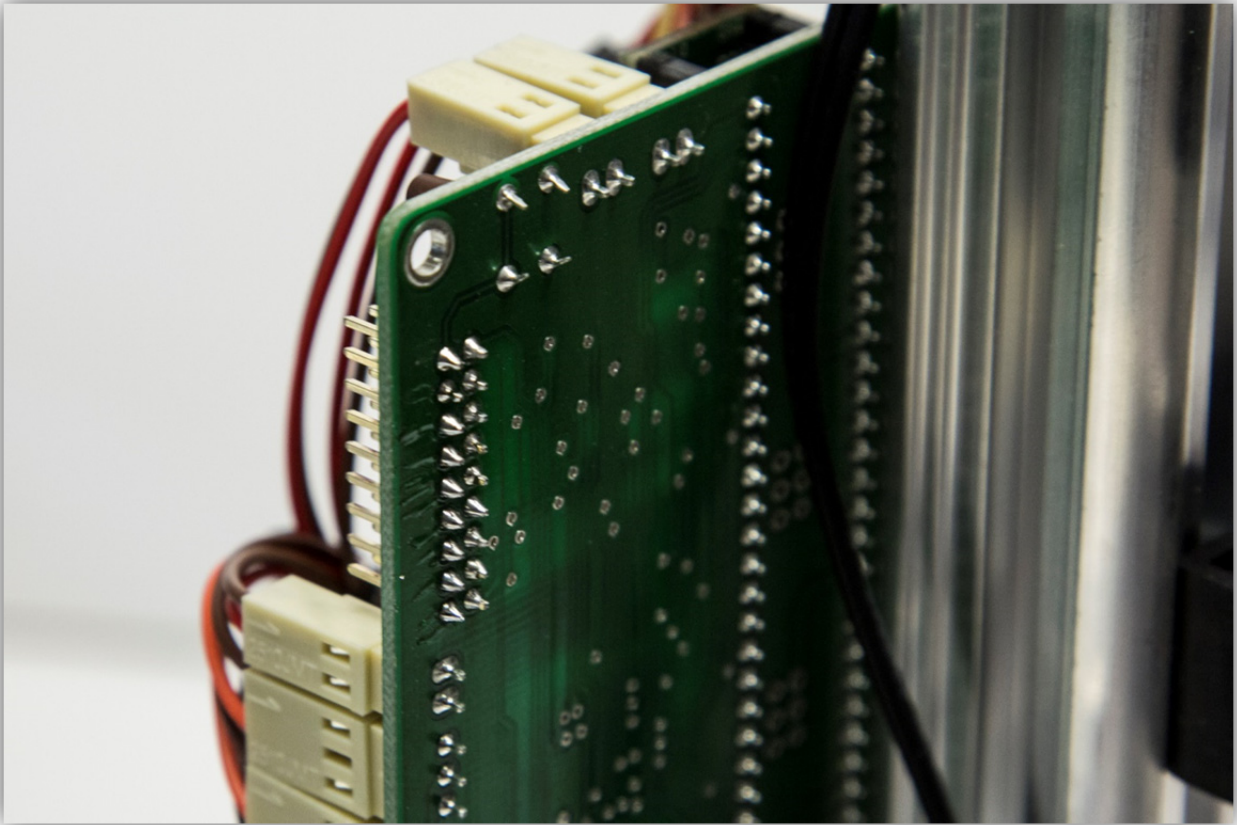
**YOU WILL HAVE TO REFLASH THE MAINBOARD OF THE PRINTER TO THE LATEST FIRMWARE (V2) TO USE THE VM8201! YOU CAN FIND THE INSTRUCTIONS TO REFLASH THE MAINBOARD IN THE LAST CHAPTER OF THE ONLINE MANUAL: "UPDATING FIRMWARE" <http://www.k8200.eu/manual/printing/?c=007> . YOU CAN FIND FIRMWARE V2 IN THE DOWNLOAD SECTION OF THE WEBSITE.**

You will need the VM8201 module.

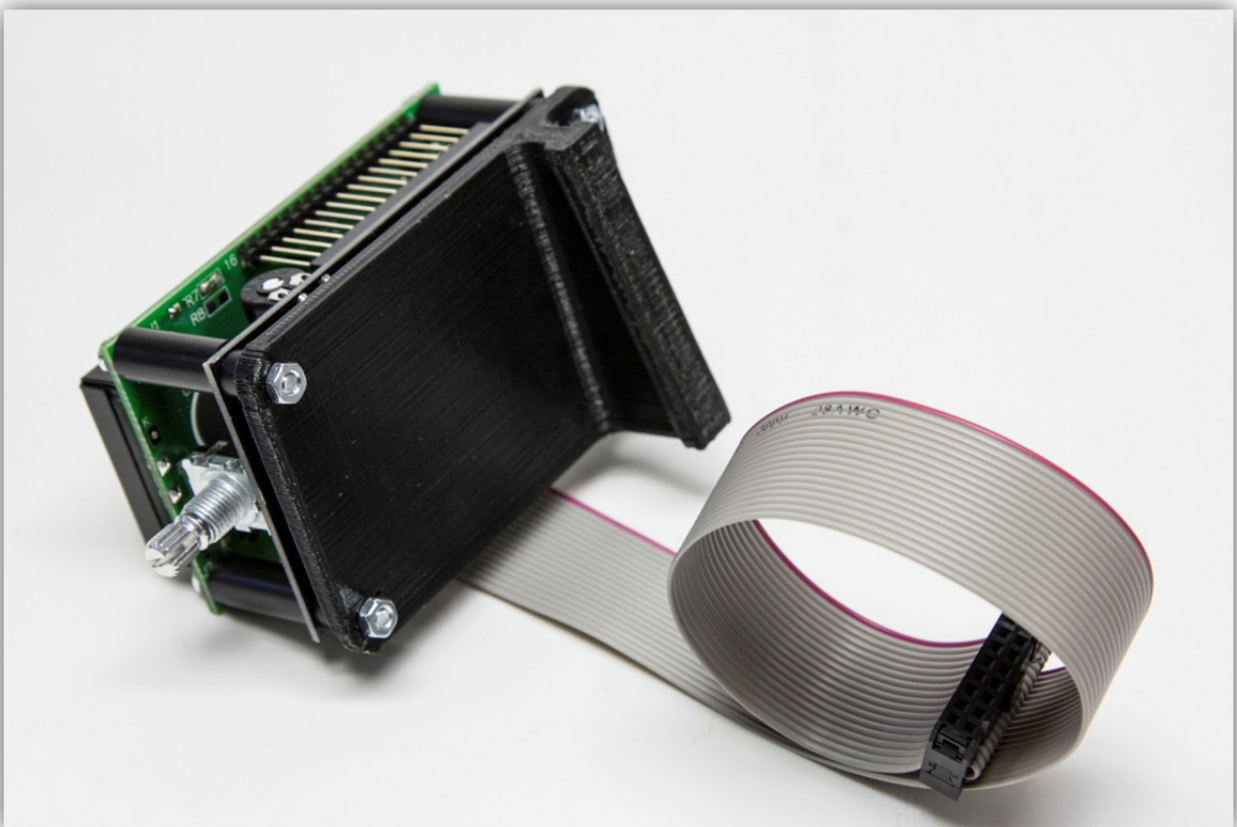


Solder the 18pin connector to the K8200 mainboard.



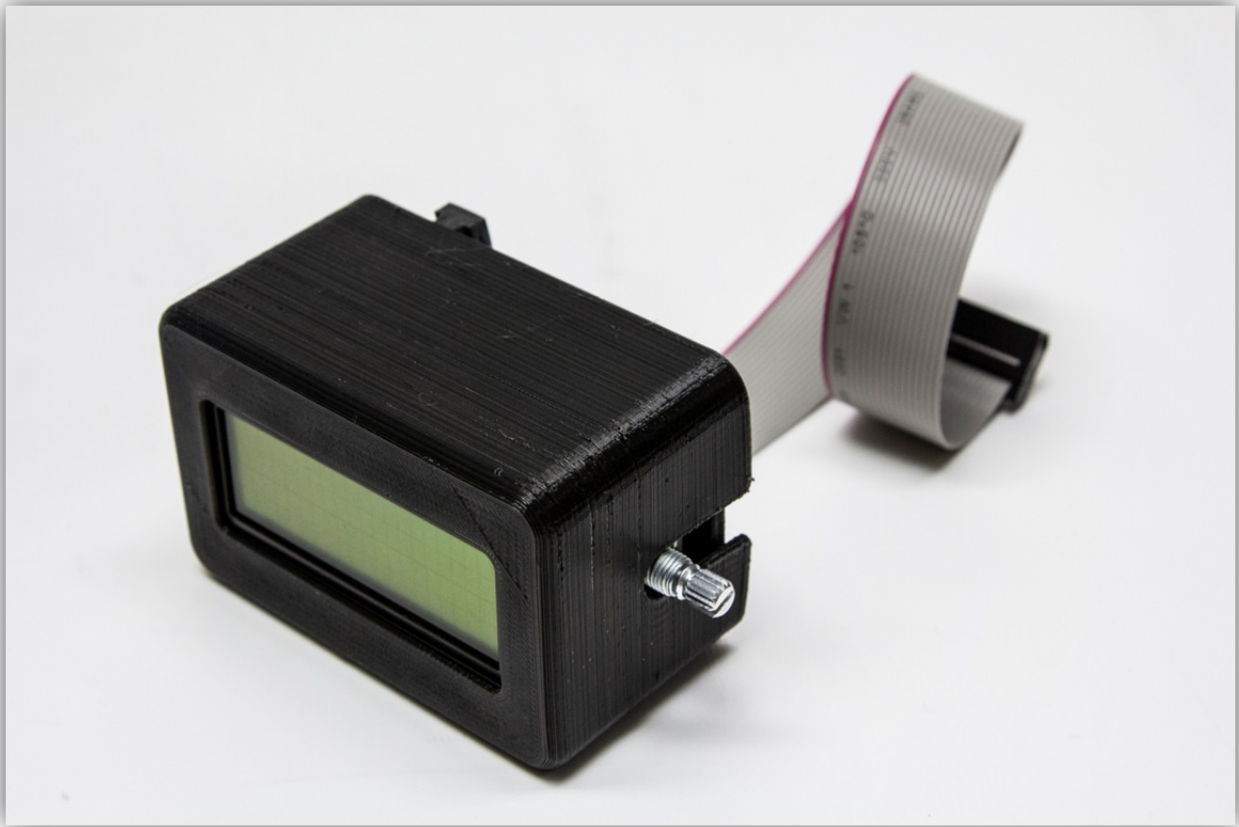


Print the 3 enclosure files for the VM8201 on the K8200, you can download them on the download section of the K8200.eu website. Loosen the 4 nuts on the back of the VM8201 and use them to attach the back of the enclosure to the module.





Snap the front of the enclosure to the module.



Attach the knob.



Slide the module down the groove of the right aluminium post. You will have to loosen the spool mount and remove some tie strips. It is possible that you will have to sand the clip on the back of the enclosure a bit so it will slide down easily.

Connect the flat cable to the mainboard. **CHECK THE POSITION OF THE RED WIRE!**

